



**DESIGNING THE FUTURE WITH  
ENGINEERING EXCELLENCE**

**PORTFOLIO**



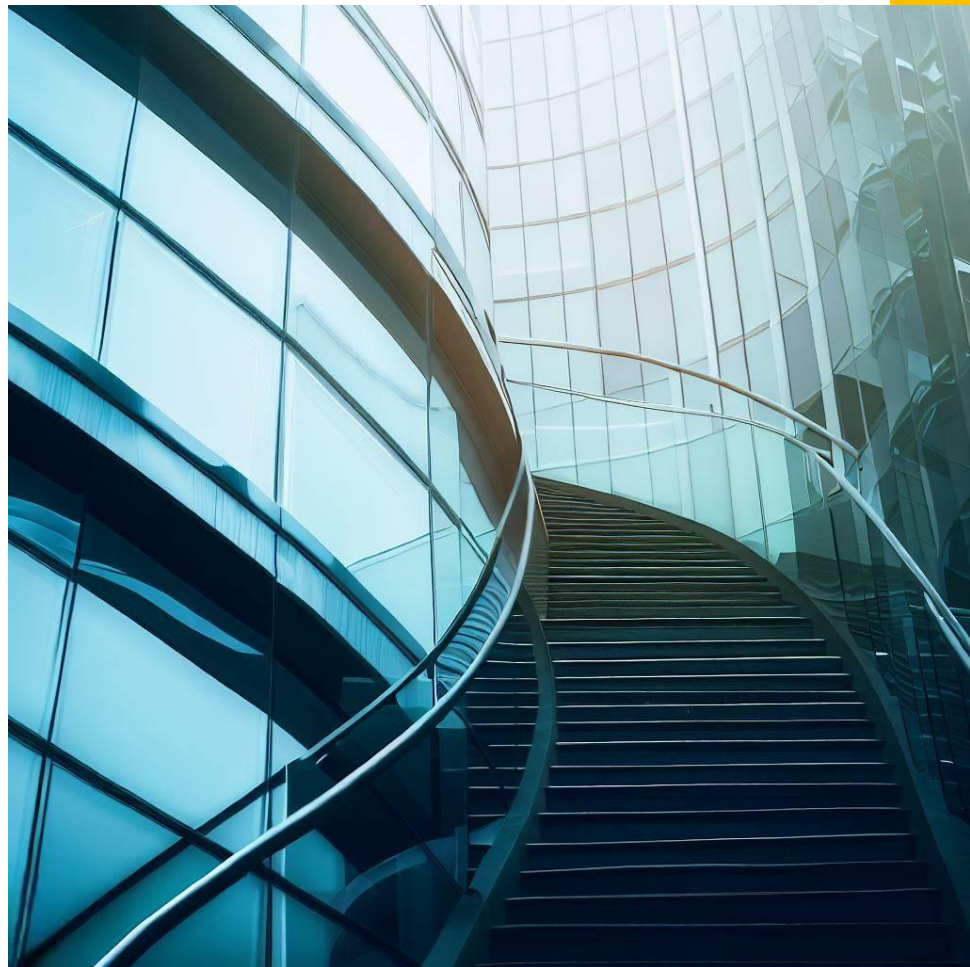
**FIND US**

## WHO WE ARE

---

Established in 2020, ZENITH Engineering LLC is a leading MEP engineering consulting firm specializing in delivering exceptional mechanical, electrical, and plumbing engineering design services to architects, developers and owners.

Our mission is to set new industry benchmarks and revolutionize MEP design practices, creating spaces that seamlessly blend functionality, efficiency, and aesthetics. By envisioning a better future, we aim to positively impact the built environment, enhance occupant comfort, and promote environmental stewardship. With an unwavering commitment to excellence and a focus on continuous improvement, we strive to be the preferred partner for clients seeking reliable, forward-thinking, and value-driven MEP consultancy services.



Partner with ZENITH Engineering LLC and experience the difference of working with a trusted MEP engineering consultant. Together, we can shape a better future by creating exceptional spaces that harmonize efficiency, functionality, and aesthetics.

## ABOUT US

# WHAT WE OFFER

---

We offer a wide range of engineering services to meet the needs of our clients. Our team of experienced engineers provide customized solutions that are efficient, durable, reliable, and designed to meet applicable international and regional codes, standards and regulations.



From mechanical and electrical engineering to plumbing and technology engineering, we provide vast range of advanced and integrated solutions, including the energy engineering and building information modelling (BIM) that help our clients achieve their goals.



## MECHANICAL ENGINEERING

---

Our Mechanical Engineering services include HVAC system design, building automation and controls, energy analysis, fire protection and life safety system design, plumbing and gas piping design, and more. Our team of experienced engineers work closely with clients to develop customized solutions that meet their specific needs and requirement



## ELECTRICAL ENGINEERING

---

Our Electrical Engineering services include power distribution system design, lighting design, fire alarm and detection system design, emergency telecommunications design, power system design, and more. We ensure that all electrical systems are designed to meet applicable codes, standards, and regulations, while providing efficient and reliable solutions.

# SERVICES





## PLUMBING ENGINEERING

Our Plumbing Engineering services include plumbing system design, medical gas system design, fire protection system design, stormwater management system design, domestic water system design, waste and vent system design, and more. Our team of experienced engineers work closely with clients to develop customized plumbing solutions that meet their specific needs and requirements.



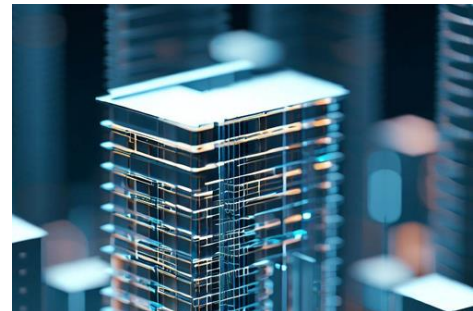
## TECHNOLOGY ENGINEERING

Our Technology Engineering services include security system design, audio-telecommunications system design, visual system design, data center design, structured cabling design, and more. We provide integrated solutions that meet the needs of modern buildings and facilities, while ensuring that all systems are designed to meet applicable codes, standards, and regulations.



## ENERGY ENGINEERING

We are dedicated to revolutionizing energy engineering services. We offer tailored solutions that are aligned with your priorities, resulting in optimized building performance, reduced energy costs & environmental footprint. Trust us to help you take a proactive stance towards energy management & build a sustainable future for your facility, based on evidence & geared towards long-term success.



## BIM MODELLING

We offer cutting-edge BIM services to elevate your construction & design projects. Our skilled team of BIM experts utilizes the latest software and technologies to create accurate and detailed digital representations of your building projects. With BIM modeling, we provide a holistic approach that integrates various aspects of your project, including architecture, structure & MEP systems.

# RECENT PROJECTS

---

At ZENITH Engineering LLC, we're proud of the work we've done for our clients. Take a look at some of our recent projects to see the high-quality MEP engineering solutions we can offer.

## ELEMENT HOTEL, GREENWOOD, CO

---



ZENITH Engineering LLC was proud to provide comprehensive mechanical, electrical, and plumbing design services for the Element Hotel in Greenwood Village, Colorado. This stunning five-story, 84,000 sq. ft. building will feature 129 guest rooms upon completion. Our team utilized cutting-edge VRF and DOAS technology to design a state-of-the-art HVAC system that will ensure optimal comfort & energy efficiency for guests throughout the year. We're thrilled to have played a part in bringing this exciting project to life & we look forward to seeing it flourish for years to come.

## HAMPTON INN, ROSWELL, NM

---



Zenith Engineering takes pride in showcasing the successful remodel of guest rooms, exercise room, and entrance for the Hampton Inn in Roswell, NM. Our team expertly crafted MEP designs that transformed the existing spaces into modern, functional, and energy-efficient areas, prioritizing guest comfort and safety. From implementing advanced HVAC systems and optimizing lighting design to incorporating intelligent controls and automation, we enhanced the guest room experience. In the exercise room, we focused on refreshing ventilation and convenient electrical outlets for exercise equipment. The entrance area received a remarkable transformation with aesthetically pleasing lighting and robust security measures. This project demonstrates our commitment to delivering innovative MEP designs that exceed client expectations, reflecting Zenith Engineering's expertise in creating exceptional spaces.

## HILTON GARDEN INN, ALBUQUERQUE, NM



Zenith Engineering is pleased to highlight our involvement in the remodel job for Hilton Garden Inn located in Albuquerque, NM. Our team played a pivotal role in providing MEP services to renovate various areas including the entrance, lobby area, swimming pool area & guest rooms. With a focus on enhancing the overall guest experience, we diligently designed MEP solutions that transformed these spaces into modern, functional & inviting areas. From implementing efficient HVAC systems & optimizing lighting designs to ensuring proper ventilation in the swimming pool area, our MEP services contributed to creating a welcoming atmosphere throughout the hotel. By collaborating closely with the client and considering their specific requirements, we successfully delivered a remodel that revitalized the Garden Inn, showcasing our commitment to excellence in engineering & creating spaces that leave a lasting impression.

## MIDDLE-EATZ RESTAURANT, NASHVILLE, TN



Zenith Engineering is proud to have provided MEP design services for Middle-Eatz Restaurant, a brand new 2,200 sq. ft. Mediterranean restaurant located in Nashville, TN. Situated in a bustling retail outlet area, this project presented an exciting opportunity to create a vibrant and inviting dining experience. Our team carefully crafted the MEP design to ensure optimal functionality, energy efficiency, and a comfortable environment for both staff and patrons. We incorporated advanced HVAC systems to maintain ideal temperature and air quality, while implementing efficient lighting solutions that enhanced the restaurant's ambiance. Additionally, we designed specialized ventilation systems to cater to the unique needs of the kitchen area, ensuring proper airflow and exhaust to maintain a clean and pleasant working environment. With our meticulous attention to detail and commitment to excellence, Zenith Engineering played a crucial role in bringing Mid-Eatz to life, providing the infrastructure necessary for a successful and enjoyable dining establishment.



## MASHA MANUFACTURING, ALBUQUERQUE, NM



Zenith Engineering proudly undertook the MEP design for Masha Manufacturing, a jewelry manufacturing facility spanning 10,000 sq. ft.. located in Albuquerque, NM. This project presented unique challenges as it required special ventilation systems to effectively exhaust fumes generated during the manufacturing process. Additionally, the workroom involved the use of hydrogen sulfide and other chemicals that produced strong odors, necessitating the implementation of negative and positive airflows to create a pleasant working environment. Understanding the importance of safety, our team ensured sufficient ventilation for the high-temperature furnaces used in casting operations. Furthermore, as the facility included a retail area, our MEP design incorporated solutions to address the specific requirements of this space. Through our expertise and attention to detail, Zenith Engineering provided comprehensive MEP designs that supported efficient and comfortable operations, promoting a safe and productive environment for Masha Manufacturing.

## AL FAROOQ COMMUNITY CENTER, NASHVILLE, TN



ZENITH Engineering LLC was honored to be a part of the transformation of the abandoned Boys and Girls Club into the thriving Al Farooq Community Center. The renovation job encompassed the entire 40,000 sq. ft. three-story building, which had been vacant for over a decade. Our team worked diligently to design mechanical and plumbing for all three floors, including the basement and top floor, which were transformed into classrooms, and the first floor, which now includes a prayer area, cafeteria with commercial kitchen, gym, and supporting spaces. The renovated building was inaugurated on February 25, 2023, and is an important addition to the growing need for the Muslim community in the area. The Al Farooq Community Center provides a vibrant atmosphere for families and kids, and we are proud to have played a part in bringing this project to life.

## MORIARITY APARTMENTS, MORIARITY, NM



Zenith Engineering proudly provided MEP design services for the Moriarity Apartments project, a remarkable endeavor situated in Moriarity, New Mexico. Spanning over 160,000 sq. ft. of land, this expansive development comprised six buildings, offering a diverse range of residential units. With meticulous attention to detail, we tailored the MEP systems to cater to the unique needs of each building type, including single-story 2-bedroom units, two-story 3-bedroom units, and two-story 2-bedroom units. Our team prioritized functionality, energy efficiency, and resident comfort, delivering innovative MEP designs that seamlessly integrated with the architectural vision of the project. Through our expertise, the Moriarity Apartments project exemplifies our commitment to creating sustainable and comfortable living spaces for the residents of Moriarity, NM.

## RACHEL MATTHEW DEVELOP., RIO RANCHO, NM



Zenith Engineering proudly undertook the MEP design for a 4,000 sq. ft. office and warehouse building in Rio Rancho, NM. Our team skillfully crafted tailored solutions for the office and warehouse spaces, ensuring optimal functionality and efficiency. We designed an HVAC system for the office area, providing comfort and energy efficiency, while incorporating robust ventilation and lighting systems in the warehouse space to support safe and productive operations. Adhering to industry standards and client preferences, our comprehensive MEP design seamlessly integrated with the overall building layout, resulting in an optimized environment that facilitates the client's operations.



## MARIGOLD RESIDENCE, ALBUQUERQUE, NM



Zenith Engineering takes great pride in showcasing its exceptional work on the luxury residence located on Marigold Rd in Albuquerque, NM. This project, spanning over 3000 square feet, exemplifies our expertise in providing top-notch mechanical, electrical, and plumbing designs. The residence boasts a remarkable great room, which serves as the heart of the home, offering an exquisite space for relaxation and entertainment. Additionally, the inclusion of an exercise room highlights our commitment to promoting a healthy lifestyle for the homeowners. The indoor and outdoor kitchens exemplify our attention to detail and dedication to creating functional and aesthetically pleasing spaces. Furthermore, the steam room provides a luxurious retreat, promoting relaxation and well-being. The study room showcases our understanding of creating conducive environments for focus and productivity. Finally, our incorporation of a soft water system ensures the homeowners' comfort and convenience. This project stands as a testament to Zenith Engineering's ability to deliver comprehensive and high-quality designs for discerning clients in the residential sector.

## MONTEREY WALK APPTS., ALBUQUERQUE, NM



Monterey Walk is a premier townhome community in the Northeast Heights of Albuquerque, New Mexico, situated on the historic site of Paul's Monterey Inn. The convenient location offers easy access to grocery stores, schools, healthcare facilities, parks, gyms, and a diverse array of dining options. ZENITH Engineering LLC collaborated with Stillbrooke Homes to provide mechanical and plumbing design services for this exceptional development. The townhomes range from cozy one-bedroom layouts to spacious three-bedroom homes, with options for up to three baths. The lower-level master bedroom boasts a generously sized walk-in closet, and each home includes a two-car garage. We're proud to have been a part of this project, which offers residents a unique blend of comfort, convenience, and style in one of Albuquerque's most desirable neighborhoods.

## CLINIC & EVENT CENTER, LOS FRESNOS, TX

---



The Clinic and Event Center in Los Fresnos features a spacious, high-ceiling event area with multiple spaces, a grand party stage, and an in-house commercial kitchen. Our design and engineer team equipped the event center with rooftop units, a floor-mounted split unit for the kitchen, and two wall-mounted grease exhaust fans. We also installed a wall-mounted make-up air unit with low-height ducts to serve the kitchen hood, ensuring the preservation of the ceiling while maintaining the mezzanine floor.

The adjacent clinic was also served by rooftop units. Our talented engineering team overcame the significant challenge posed by the low-height roof, delivering a functional and efficient solution for both the clinic and event center.

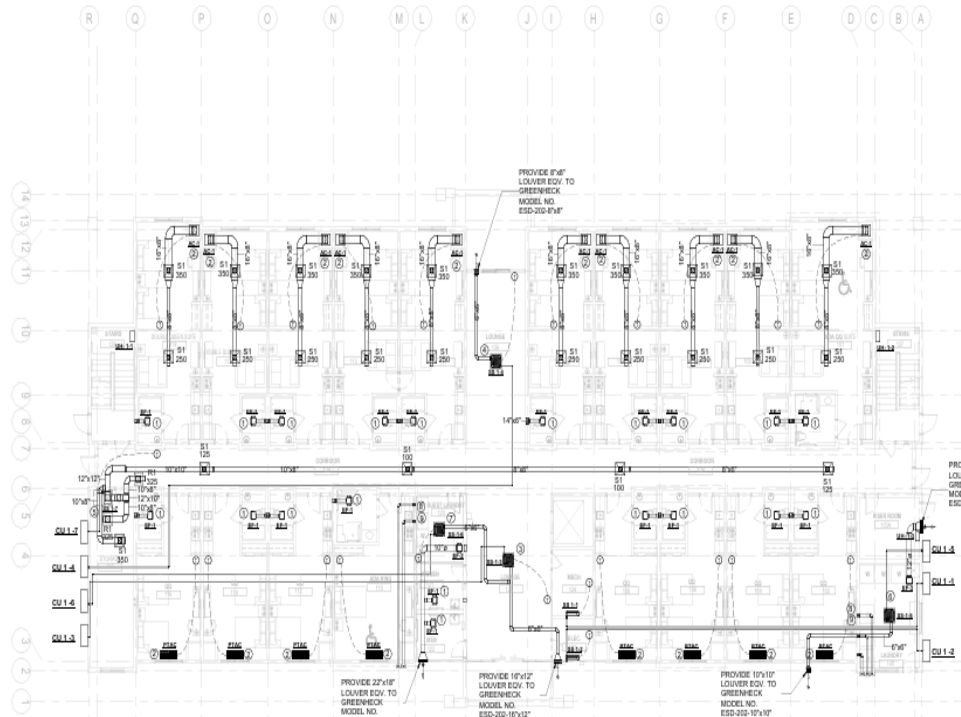
## LITTLE BLUE SCHOOL, CARBONDALE, COLORADO

---



The Little Blue School, located in a high elevation area, has recently undergone an expansion project that prioritizes energy efficiency and sustainability. As part of the project, we installed high-efficiency ducted split units integrated with energy recovery ventilators (ERV) to optimize the heating, ventilation, and air conditioning systems. To ensure compliance with local regulations and demonstrate the effectiveness of our approach, our proficient team conducted thorough energy modeling, which confirmed that our system meets and exceeds the required efficiency standards. Additionally, we incorporated a high-efficiency hybrid water heater to further enhance the building's energy performance, reflecting our commitment to sustainable design and reduced environmental impact.

## BIRDIE PARK APARTMENT, ABQ, NEW MEXICO



Zenith Engineering is delivering comprehensive Mechanical, Electrical, and Plumbing (MEP) design services for multiple suites within the two-story Birdie Park apartment building, located in Albuquerque, New Mexico. The scope of work encompasses the full design and coordination of building systems to ensure efficient, sustainable, and code-compliant solutions tailored to a residential environment. The mechanical design includes HVAC load calculations, equipment sizing, and ductwork layouts to provide energy-efficient climate control and occupant comfort. The electrical scope addresses power distribution, lighting layouts, panel schedules, and receptacle planning, while also ensuring compliance with safety standards and supporting modern residential requirements. Plumbing design covers domestic water supply, sanitary drainage, and venting systems, with an emphasis on reliability, efficiency, and adherence to applicable codes. Final deliverables will include fully coordinated drawings and documentation, ensuring seamless integration of all MEP systems. This project highlights Zenith's commitment to delivering functional, safe, and high-performing MEP designs that enhance the quality of residential living spaces.



## TIJERAS APARTMENT, TIJERAS AVE, NEW MEXICO

---



We proudly completed the full MEP design for the Tijeras Apartments, a two-story residential project located on Tijeras Avenue, New Mexico. The scope included comprehensive HVAC, electrical, and plumbing systems, all designed in strict accordance with New Mexico building codes and energy standards. Our team delivered efficient, cost-effective, and sustainable solutions tailored to the needs of multi-family living, ensuring optimal safety, comfort, and long-term performance. Throughout the project, we collaborated closely with the architectural team and stakeholders to maintain design accuracy and meet project goals. The successful completion of this development highlights Zenith Engineering's commitment to innovation, precision, and reliable service across diverse states, reinforcing our position as a trusted partner for residential, commercial, and industrial MEP design projects.

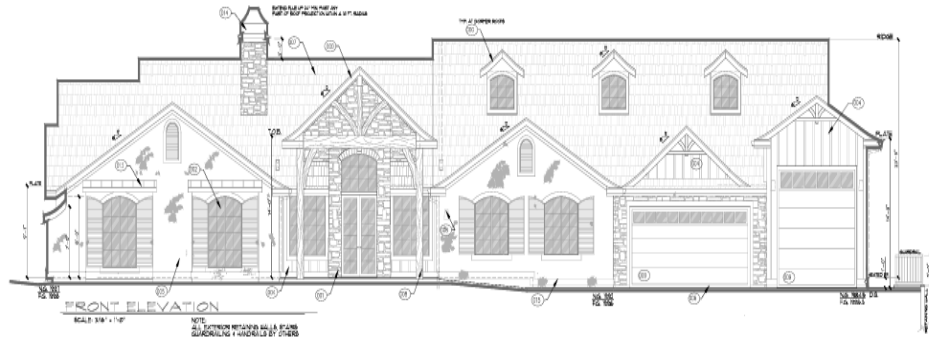
## JACKSON RESIDENCE, NEW MEXICO

---



Zenith Engineering proudly presents its role in providing comprehensive MEP design services for the Jackson Residence, a luxury residential project encompassing approximately 10,000 square feet in New Mexico. The scope of work includes the design of energy-efficient HVAC systems in full compliance with local building codes to ensure superior comfort, along with a robust plumbing system addressing water supply, drainage, and venting needs for a large-scale residence. Additionally, Zenith is providing complete Electrical design services, including lighting design, power distribution, and panel scheduling, ensuring seamless MEP coordination and system integration. This project reflects Zenith's commitment to delivering high-performance, fully compliant, and sustainable design solutions tailored to the client's long-term needs.

## STALLONE, SCOTTSDALE, AZ



We provided the complete MEP design for the Stallone Family Bungalow, a spacious and elegantly designed residential property. Our team delivered fully integrated Mechanical, Electrical, and Plumbing solutions tailored to the needs of this luxurious home. From advanced HVAC planning to efficient electrical layouts and modern plumbing systems, every component was designed to ensure maximum comfort, safety, and long-term reliability. This project highlights our expertise in delivering high-quality MEP design services for large, upscale bungalow-style residences.

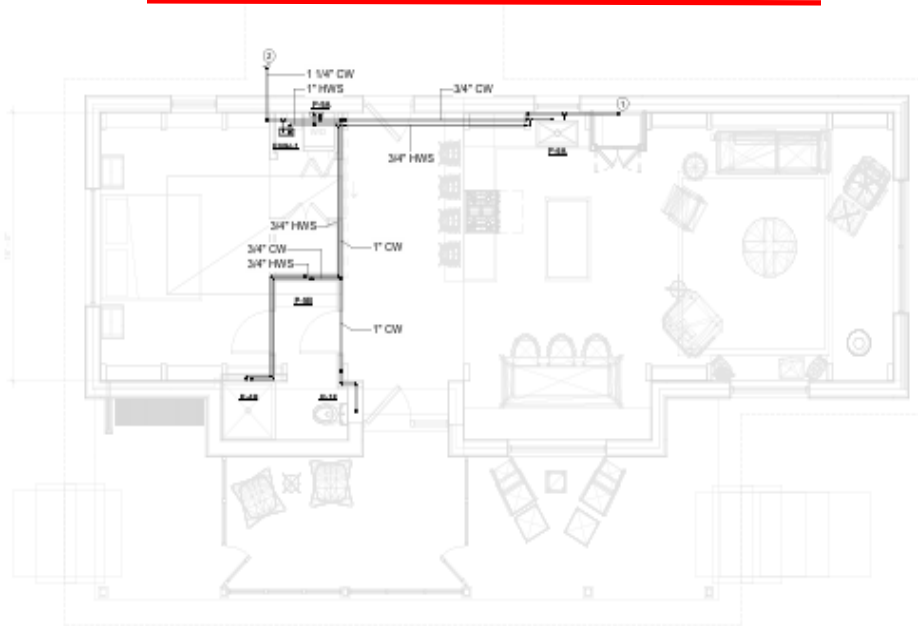
## MONUMENT CT, PALM SPRINGS, CA



Monument CT in Palm Springs, CA, is one of Zenith Engineering's most remarkable projects, showcasing the pinnacle of luxury and design. We delivered complete MEP solutions that seamlessly blend performance with elegance. The HVAC system provided energy-efficient heating, cooling, and ventilation for ultimate comfort. The electrical design featured advanced power

distribution, sophisticated lighting, and smart home integration, ensuring both safety and convenience. The plumbing system was engineered for reliability and efficiency, covering water supply, drainage, and high-end fixtures, perfectly complementing the home's luxurious lifestyle.

## LF RESIDENTIAL, SAN ANTONIO, TX



Zenith Engineering successfully provided the complete MEP design for the LF Residential House located in San Antonio, Texas. This project involved delivering fully coordinated Mechanical, Electrical, and Plumbing solutions tailored to meet the functional and comfort needs of the residence. Our team ensured that all systems were designed in compliance with local codes and energy standards while maintaining efficiency, safety, and long-term reliability. The successful completion of this project reflects our commitment to delivering high-quality MEP engineering services for modern residential homes.

## ICT SCHOOL, ANTIOCH, TENNESSEE

Zenith Engineering is honored to providing comprehensive Mechanical, Electrical, and Plumbing (MEP) design services for the full renovation of the ICT Islamic School building in Antioch, TN, encompassing approximately 50,000 square feet. The scope includes evaluation of existing systems and development of new designs that ensure compliance with current building codes, energy efficiency standards, and the functional requirements of a modern educational facility. Mechanical services involve detailed load calculations, equipment selection, and design of ductwork and piping systems to enhance comfort and indoor air quality. Electrical services cover the assessment and redesign of distribution systems, including power, lighting, receptacles, fire alarm, and emergency systems to meet safety and operational needs. Plumbing services include domestic water, sanitary sewer, storm drainage, and specification of code-compliant, accessible fixtures with efficient layouts. This ongoing project reflects Zenith's ability to deliver integrated, high-quality MEP solutions that balance safety, performance, and sustainability while supporting the operational and long-term goals of the school.



## GARDENA CHRISTIAN ACADEMY, GARDENA, CA

---



Zenith Engineering is pleased to present its role in providing comprehensive Mechanical, Electrical, and Plumbing (MEP) design services for Gardena Christian Academy, located in Gardena, California. The project scope encompassed the renovation and upgrade of existing facilities, with a focus on modernizing systems to improve efficiency, safety, and compliance with local building and health codes. The MEP design included optimized HVAC solutions for proper ventilation and indoor air quality, efficient electrical load distribution with updated power and lighting systems, and reliable plumbing infrastructure to support the upgraded facility requirements. This project demonstrates Zenith's expertise in delivering integrated MEP solutions tailored to institutional facilities, ensuring long-term functionality, compliance, and enhanced operational performance for the Academy.

## GAME POINT, HANOVER, CALIFORNIA

---



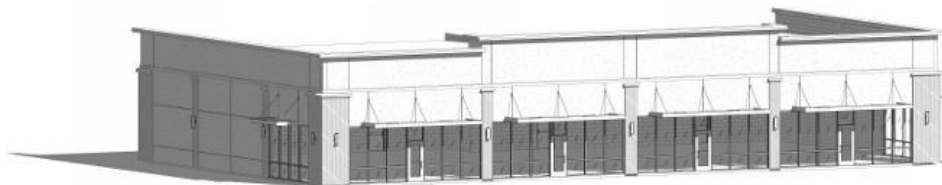
Zenith Engineering proudly undertook the MEP design of renovation of Game Point-tenant space. The scope of the project involved the MEP (Mechanical, Electrical, and Plumbing) design for the interior renovation of a tenant space covering the total area of approximately 37,000 sqft., in Hanover, California. This included the designing systems for new restroom suites, converting the existing sauna into a bar, and the removal of existing boilers servicing a pool. Ensuring Title 24 energy compliance was a key deliverable, including related checks such as energy efficiency evaluations, lighting power calculations, HVAC systems, and compliance. The scope focused on modifications of HVAC systems, plumbing layouts, and electrical configurations to meet the functional and regulatory requirements of the renovated spaces.

## SANTA MONICA RESTAURANT, CALIFORNIA



Our team of experts skillfully crafted tailored MEP solutions for the restaurant space, ensuring optimal functionality and efficiency. The scope of this project involved the complete MEP design for a restaurant located on Santa Monica Blvd, covering an area of approx. 5,000 sq ft. The mechanical design of the restaurant included the comprehensive HVAC design to maintain indoor air quality and comfort. The electrical system covered power distribution and lighting to support restaurant operations. The plumbing design ensured a reliable water supply and proper drainage. All designs adhered to industry standards and regulatory requirements for optimal performance and sustainability.

## LA VERGNE MARKET, LA VERGNE, TN





Our expert team of designers and engineers beautifully renovated an existing market space having the area of 7000 sqft. The scope of the project involved providing the comprehensive Mechanical,


Electrical, and Plumbing (MEP) design services including the designing of HVAC systems, electrical power and lighting layouts, and plumbing systems. Key objectives were to ensure functionality, compliance with local building codes, and enhanced user comfort.





 Brownsville, TX - Austin, TX -  
Albuquerque, NM - Nashville, TN

 +1 (505) 702 5805

 +1 (505) 702 5805

 [htariq@zenith-engr.com](mailto:htariq@zenith-engr.com)

 [www.zenith-engr.com](http://www.zenith-engr.com)



**FIND US**