



DESIGNING THE FUTURE WITH
ENGINEERING EXCELLENCE

PORTFOLIO

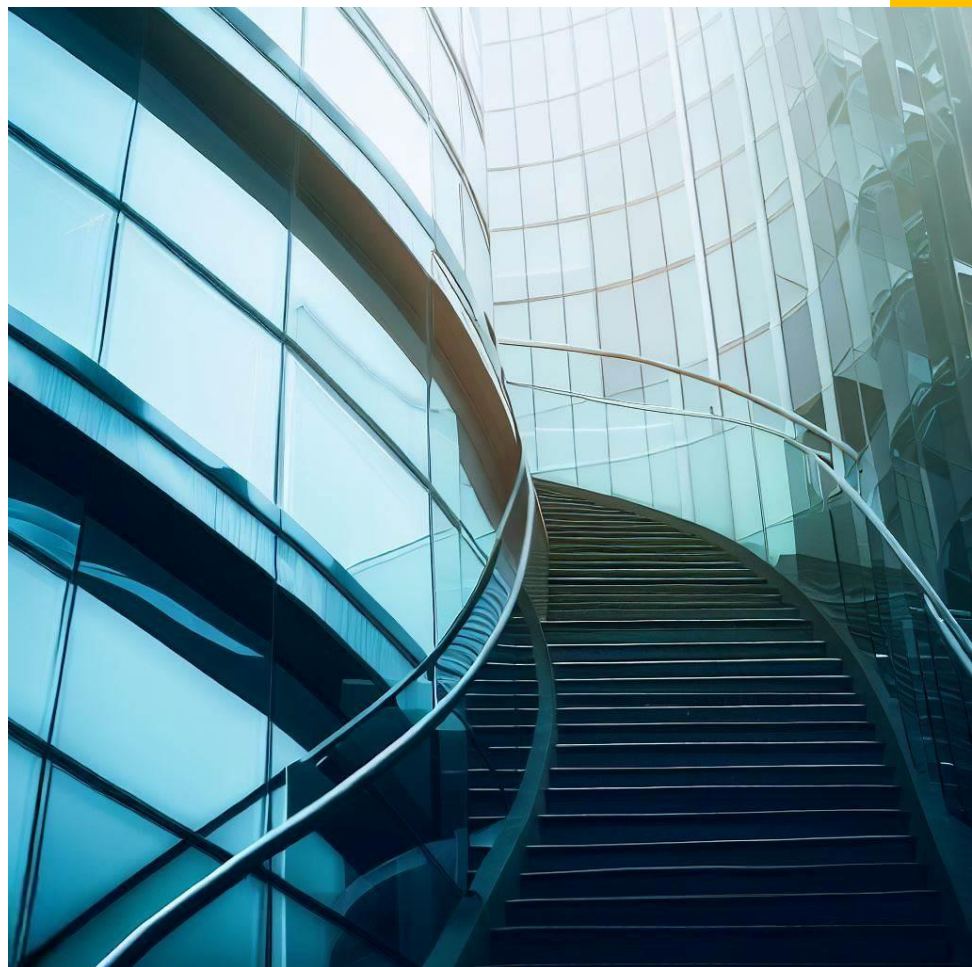


FIND US

WHO WE ARE

Established in 2020, ZENITH Engineering LLC is a leading MEP engineering consulting firm specializing in delivering exceptional mechanical, electrical, and plumbing engineering design services to architects, developers, and owners.

Our mission is to set new industry benchmarks and revolutionize MEP design practices, creating spaces that seamlessly blend functionality, efficiency, and aesthetics. By envisioning a better future, we aim to positively impact the built environment, enhance occupant comfort, and promote environmental stewardship. With an unwavering commitment to excellence and a focus on continuous improvement, we strive to be the preferred partner for clients seeking reliable, forward-thinking, and value-driven MEP consultancy services.



ABOUT US

Partner with ZENITH Engineering LLC and experience the difference of working with a trusted MEP engineering consultant. Together, we can shape a better future by creating exceptional spaces that harmonize efficiency, functionality, and aesthetics.

WHAT WE OFFER

We offer a wide range of engineering services to meet the needs of our clients. Our team of experienced engineers provide customized solutions that are efficient, durable, reliable, and designed to meet applicable international and regional codes, standards, and regulations.



From mechanical and electrical engineering to plumbing and technology engineering, we provide vast range of advanced and integrated solutions, including the energy engineering and building information modelling (BIM) that help our clients achieve their goals.



MECHANICAL ENGINEERING

Our Mechanical Engineering services include HVAC system design, building automation and controls, energy analysis, fire protection and life safety system design, plumbing and gas piping design, and more. Our team of experienced engineers work closely with clients to develop customized solutions that meet their specific needs and requirement



ELECTRICAL ENGINEERING

Our Electrical Engineering services include power distribution system design, lighting design, fire alarm and detection system design, emergency telecommunications design, power system design, and more. We ensure that all electrical systems are designed to meet applicable codes, standards, and regulations, while providing efficient and reliable solutions.

SERVICES

SERVICES



PLUMBING ENGINEERING

Our Plumbing Engineering services include plumbing system design, medical gas system design, fire protection system design, stormwater management system design, domestic water system design, waste and vent system design, and more. Our team of experienced engineers work closely with clients to develop customized plumbing solutions that meet their specific needs and requirements.



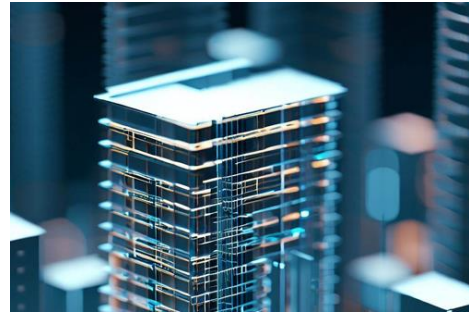
TECHNOLOGY ENGINEERING

Our Technology Engineering services include security system design, audio-telecommunications system design, visual system design, data center design, structured cabling design, and more. We provide integrated solutions that meet the needs of modern buildings and facilities, while ensuring that all systems are designed to meet applicable codes, standards, and regulations.



ENERGY ENGINEERING

We are dedicated to revolutionizing energy engineering services. We offer tailored solutions that are aligned with your priorities, resulting in optimized building performance, reduced energy costs & environmental footprint. Trust us to help you take a proactive stance towards energy management & build a sustainable future for your facility, based on evidence & geared towards long-term success.



BIM MODELLING

We offer cutting-edge BIM services to elevate your construction & design projects. Our skilled team of BIM experts utilizes the latest software and technologies to create accurate and detailed digital representations of your building projects. With BIM modeling, we provide a holistic approach that integrates various aspects of your project, including architecture, structure & MEP systems.

RECENT PROJECTS

At ZENITH Engineering LLC, we're proud of the work we've done for our clients. Take a look at some of our recent projects to see the high-quality MEP engineering solutions we can offer.

ELEMENT HOTEL, GREENWOOD, CO



ZENITH Engineering LLC was proud to provide comprehensive mechanical, electrical, and plumbing design services for the Element Hotel in Greenwood Village, Colorado. This stunning five-story, 84,000 sq. ft. building will feature 129 guest rooms upon completion. Our team utilized cutting-edge VRF and DOAS technology to design a state-of-the-art HVAC system that will ensure optimal comfort & energy efficiency for guests throughout the year. We're thrilled to have played a part in bringing this exciting project to life & we look forward to seeing it flourish for years to come.

HAMPTON INN, ROSWELL, NM



Zenith Engineering takes pride in showcasing the successful remodel of guest rooms, exercise room, and entrance for the Hampton Inn in Roswell, NM. Our team expertly crafted MEP designs that transformed the existing spaces into modern, functional, and energy-efficient areas, prioritizing guest comfort and safety. From implementing advanced HVAC systems and optimizing lighting design to incorporating intelligent controls and automation, we enhanced the guest room experience. In the exercise room, we focused on refreshing ventilation and convenient electrical outlets for exercise equipment. The entrance area received a remarkable transformation with aesthetically pleasing lighting and robust security measures. This project demonstrates our commitment to delivering innovative MEP designs that exceed client expectations, reflecting Zenith Engineering's expertise in creating exceptional spaces.

HILTON GARDEN INN, ALBUQUERQUE, NM



Zenith Engineering is pleased to highlight our involvement in the remodel job for Hilton Garden Inn located in Albuquerque, NM. Our team played a pivotal role in providing MEP services to renovate various areas including the entrance, lobby area, swimming pool area & guest rooms. With a focus on enhancing the overall guest experience, we diligently designed MEP solutions that transformed these spaces into modern, functional & inviting areas. From implementing efficient HVAC systems & optimizing lighting designs to ensuring proper ventilation in the swimming pool area, our MEP services contributed to creating a welcoming atmosphere throughout the hotel. By collaborating closely with the client and considering their specific requirements, we successfully delivered a remodel that revitalized the Garden Inn, showcasing our commitment to excellence in engineering & creating spaces that leave a lasting impression.

MIDDLE-EATZ RESTAURANT, NASHVILLE, TN



Zenith Engineering is proud to have provided MEP design services for Middle-Eatz Restaurant, a brand new 2,200 sq. ft. Mediterranean restaurant located in Nashville, TN. Situated in a bustling retail outlet area, this project presented an exciting opportunity to create a vibrant and inviting dining experience. Our team carefully crafted the MEP design to ensure optimal functionality, energy efficiency, and a comfortable environment for both staff and patrons. We incorporated advanced HVAC systems to maintain ideal temperature and air quality, while implementing efficient lighting solutions that enhanced the restaurant's ambiance. Additionally, we designed specialized ventilation systems to cater to the unique needs of the kitchen area, ensuring proper airflow and exhaust to maintain a clean and pleasant working environment. With our meticulous attention to detail and commitment to excellence, Zenith Engineering played a crucial role in bringing Middle-Eatz to life, providing the infrastructure necessary for a successful and enjoyable dining establishment.

MASHA MANUFACTURING, ALBUQUERQUE, NM



Zenith Engineering proudly undertook the MEP design for Masha Manufacturing, a jewelry manufacturing facility spanning 10,000 sq. ft.. located in Albuquerque, NM. This project presented unique challenges as it required special ventilation systems to effectively exhaust fumes generated during the manufacturing process. Additionally, the workroom involved the use of hydrogen sulfide and other chemicals that produced strong odors, necessitating the implementation of negative and positive airflows to create a pleasant working environment. Understanding the importance of safety, our team ensured sufficient ventilation for the high-temperature furnaces used in casting operations. Furthermore, as the facility included a retail area, our MEP design incorporated solutions to address the specific requirements of this space. Through our expertise and attention to detail, Zenith Engineering provided comprehensive MEP designs that supported efficient and comfortable operations, promoting a safe and productive environment for Masha Manufacturing.

AL FAROOQ COMMUNITY CENTER, NASHVILLE, TN



ZENITH Engineering LLC was honored to be a part of the transformation of the abandoned Boys and Girls Club into the thriving Al Farooq Community Center. The renovation job encompassed the entire 40,000 sq. ft. three-story building, which had been vacant for over a decade. Our team worked diligently to design mechanical and plumbing for all three floors, including the basement and top floor, which were transformed into classrooms, and the first floor, which now includes a prayer area, cafeteria with commercial kitchen, gym, and supporting spaces. The renovated building was inaugurated on February 25, 2023, and is an important addition to the growing need for the Muslim community in the area. The Al Farooq Community Center provides a vibrant atmosphere for families and kids, and we are proud to have played a part in bringing this project to life.

MORIARITY APARTMENTS, MORIARITY, NM



Zenith Engineering proudly provided MEP design services for the Moriarity Apartments project, a remarkable endeavor situated in Moriarity, New Mexico. Spanning over 160,000 sq. ft. of land, this expansive development comprised six buildings, offering a diverse range of residential units. With meticulous attention to detail, we tailored the MEP systems to cater to the unique needs of each building type, including single-story 2-bedroom units, two-story 3-bedroom units, and two-story 2-bedroom units. Our team prioritized functionality, energy efficiency, and resident comfort, delivering innovative MEP designs that seamlessly integrated with the architectural vision of the project. Through our expertise, the Moriarity Apartments project exemplifies our commitment to creating sustainable and comfortable living spaces for the residents of Moriarity, NM.

RACHEL MATTHEW DEVELOP., RIO RANCHO, NM



Zenith Engineering proudly undertook the MEP design for a 4,000 sq. ft. office and warehouse building in Rio Rancho, NM. Our team skillfully crafted tailored solutions for the office and warehouse spaces, ensuring optimal functionality and efficiency. We designed an HVAC system for the office area, providing comfort and energy efficiency, while incorporating robust ventilation and lighting systems in the warehouse space to support safe and productive operations. Adhering to industry standards and client preferences, our comprehensive MEP design seamlessly integrated with the overall building layout, resulting in an optimized environment that facilitates the client's operations.

MARIGOLD RESIDENCE, ALBUQUERQUE, NM



Zenith Engineering takes great pride in showcasing its exceptional work on the luxury residence located on Marigold Rd in Albuquerque, NM. This project, spanning over 3000 square feet, exemplifies our expertise in providing top-notch mechanical, electrical, and plumbing designs. The residence boasts a remarkable great room, which serves as the heart of the home, offering an exquisite space for relaxation and entertainment. Additionally, the inclusion of an exercise room highlights our commitment to promoting a healthy lifestyle for the homeowners. The indoor and outdoor kitchens exemplify our attention to detail and dedication to creating functional and aesthetically pleasing spaces. Furthermore, the steam room provides a luxurious retreat, promoting relaxation and well-being. The study room showcases our understanding of creating conducive environments for focus and productivity. Finally, our incorporation of a soft water system ensures the homeowners' comfort and convenience. This project stands as a testament to Zenith Engineering's ability to deliver comprehensive and high-quality designs for discerning clients in the residential sector.

MONTEREY WALK APPTS., ALBUQUERQUE, NM



Monterey Walk is a premier townhome community in the Northeast Heights of Albuquerque, New Mexico, situated on the historic site of Paul's Monterey Inn. The convenient location offers easy access to grocery stores, schools, healthcare facilities, parks, gyms, and a diverse array of dining options. ZENITH Engineering LLC collaborated with Stillbrooke Homes to provide mechanical and plumbing design services for this exceptional development. The townhomes range from cozy one-bedroom layouts to spacious three-bedroom homes, with options for up to three baths. The lower-level master bedroom boasts a generously sized walk-in closet, and each home includes a two-car garage. We're proud to have been a part of this project, which offers residents a unique blend of comfort, convenience, and style in one of Albuquerque's most desirable neighborhoods.

ZENITH LEADERSHIP



Every great company is made up of great people. We're proud of our employees, our leadership team and their commitment to quality.



HISHAM TARIQ, PE

Principal Engineer

Hisham Tariq is an accomplished Principal Engineer and the founder of Zenith Engineering. With a strong background in mechanical engineering, including a Bachelor's and Master's degree, Hisham brings over 10 years of experience in the MEP industry. He holds professional licenses in several states across the US. Specializing in healthcare, hospitality, apartments, commercial, and high-rise projects, Hisham's expertise has enabled Zenith Engineering to deliver exceptional results. With a focus on quality, client satisfaction, and driving innovation, Hisham ensures that Zenith Engineering remains at the forefront of the industry. As the visionary behind Zenith Engineering, Hisham Tariq continues to shape the industry providing outstanding services through his firm.



DANIYAL AKBAR

Mechanical Engineer

Daniyal Akbar is an experienced Mechanical Engineer at Zenith Engineering, with a diverse exposure in projects ranging from office buildings and healthcare facilities to residential complexes and high-rise structures. He obtained both his Bachelor's & Master's degrees in Mechanical Engineering from NED University. Daniyal brings a strong technical skillset & proficiency in engineering software (incl. expertise in Revit). His attention to detail, problem-solving abilities & effective project coordination make him a valuable asset to the team. Daniyal's dedication to continuous growth and innovative solutions ensures the delivery of high-quality mechanical engineering services for his firm.

LEADERSHIP

LEADERSHIP



ZUBAIR NABI

Sr. Mechanical Designer

Zubair Nabi is a highly skilled Senior Mechanical Designer at Zenith Engineering, bringing over 15+ years of industry experience to the team. Proficient in AutoCAD, Revit, and BIM, Zubair has successfully worked on a diverse range of projects, including shopping malls, retail outlets, schools, hotels, residences, and healthcare facilities. With his strong technical background and meticulous approach to design, Zubair ensures the delivery of efficient and effective mechanical solutions. As a valued member of Zenith Engineering, Zubair's expertise and extensive industry experience contribute to the firm's success in providing top-quality mechanical design services.



HUMNA JAMIL

Director, HR

Humna Jamil is the accomplished Director of Human Resources at Zenith Engineering, driving organizational success through strategic HR management. With a focus on talent acquisition, employee development, and fostering a positive work culture, she ensures employee engagement, productivity, and satisfaction. Humna's leadership enables the HR team to provide valuable support, creating an inclusive work environment that promotes professional growth. Her commitment to enhancing employee experiences contributes to Zenith Engineering's overall success.



-  Brownsville, TX - Dallas, TX -
Albuquerque, NM - Nashville, TN
-  +1 (505) 702 5805
-  +1 (505) 702 5805
-  info@zenith-engr.com
-  www.zenith-engr.com



FIND US